



Hampstead
Heath

Registered Charity

Jonathan Meares
Conservation and Trees Manager
Hampstead Heath
Natural Environment
City of London Corporation

The City of London provides 14 green spaces in and around London for the benefit of local communities. Most are registered charities operating at little cost to the general public.



Hampstead Heath

Registered Charity

Hampstead Heath
Highgate Wood
Queen's Park

Location of the new pond



City of London – protecting green spaces since the 1850s

Previous pond installations on the Heath

Tumulus Field Pond (Meg's Pond) 2010



Cohen's Field Ponds 2006/7





Hampstead
Heath

Registered Charity

Hampstead Heath
Highgate Wood
Queen's Park

Construction Plan for Branch Hill site

2022 to 2023

- Bramble management around the pond site to reduce impact on bird nesting activity before onset of bird nesting season (March to July).
- Excavation of footprint of pond, and relocation of spoil to adjacent site.
- Puddling clay lining constructed and aquatic and marginal planting.
- Fencing installed.

2023 to 2024

- Species monitoring and recording commences
- Running repairs to puddling clay and any additional planting.



Hampstead
Heath

Registered Charity

Hampstead Heath
Highgate Wood
Queen's Park

Funding the construction of the pond

- Redington Frogmal have very kindly offered £4,800 towards the materials for constructing the pond (puddling clay, fencing, and signage).
- The City of London Conservation Team will undertake the construction of the pond and also supply all the plants (sourced from nearby ponds).
- The City of London will also carry out all cyclical maintenance following construction and planting.

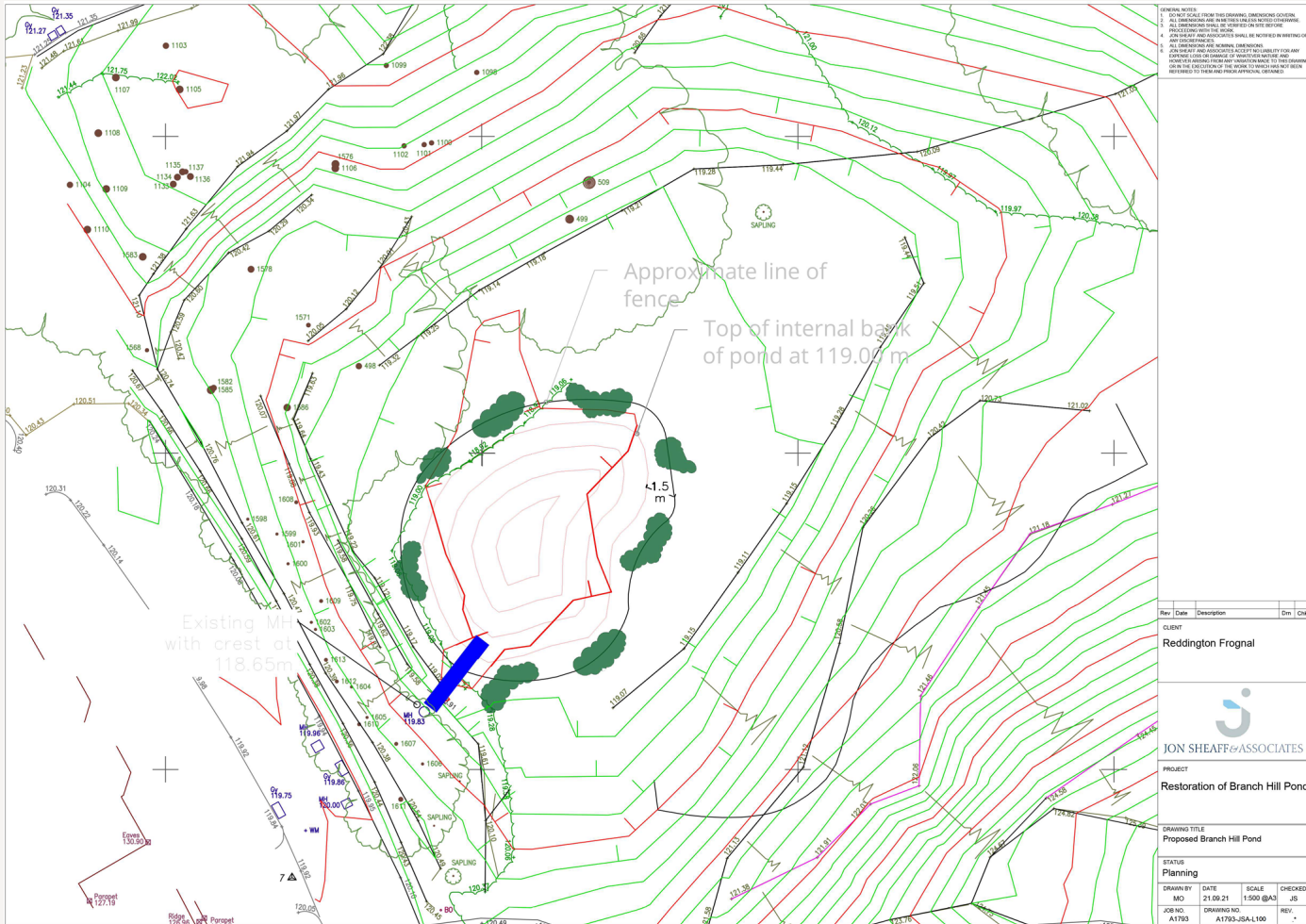


Hampstead Heath

Registered Charity

Hampstead Heath
Highgate Wood
Queen's Park

Plan of the Pond



City of London – protecting green spaces since the 1850s



Hampstead
Heath

Registered Charity

Hampstead Heath
Highgate Wood
Queen's Park

Pond size comparisons



City of London – protecting green spaces since the 1850s



Hampstead
Heath

Registered Charity

Hampstead Heath
Highgate Wood
Queen's Park

What we want to achieve



City of London – protecting green spaces since the 1850s



Hampstead
Heath

Registered Charity

Hampstead Heath
Highgate Wood
Queen's Park

Planting options and nearby pond species

Aquatic plants transplanted from other Heath pond sites nearby

- flag iris, celery leaved buttercup, marsh marigold and water mint. Not bulrush, reed sweet grass, bur-reed.

Marginal plants

- Meadowsweet, giant butterbur, purple loosestrife, water figwort, marsh woundwort and soft rush.

Invertebrates recorded at Heath Extension Ponds

- Common blue damselfly, blue-tailed damselfly, azure damselfly, large red damselfly, brown hawkler, migrant hawkler, southern hawkler, common darter, ruddy darter, broad bodied chaser, emperor dragonfly and a single emerald damselfly.
- Lesser marsh grasshopper, common field grasshopper and meadow grasshopper

Birds recorded at Heath Extension Ponds

- Mandarin ducks often use the ponds to overwinter and over 40 have been observed at one time on pond 7. The ponds are also a very good site for moorhens to breed, due to being largely fenced off. Kingfishers are also seen to frequent the ponds, often perching on the outflow pipe. Green Woodpecker which feed on Yellow Meadow Ants (many anthills in nearby grassland).

And if we are very lucky – a reed warbler!